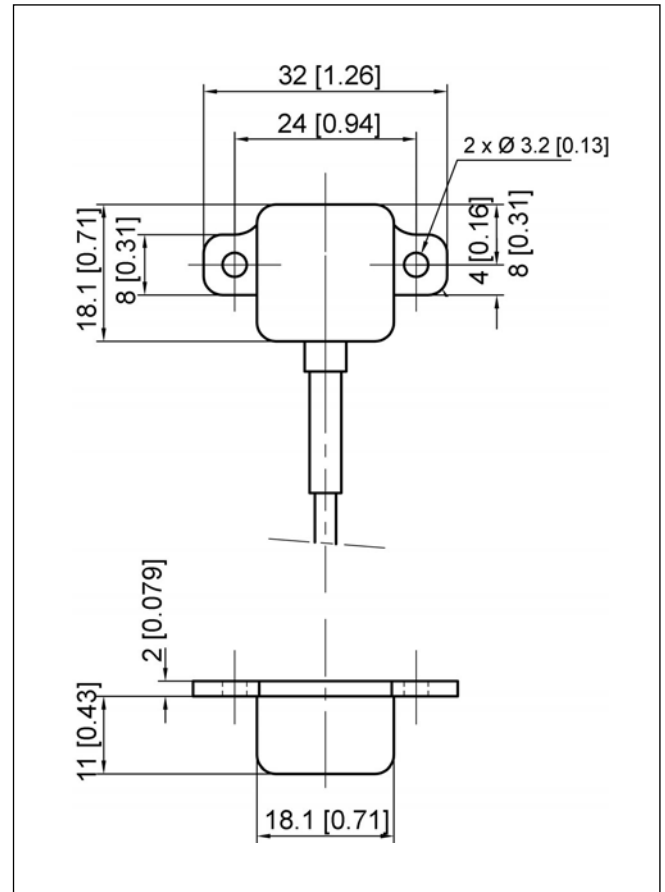


- Full Scale Range ± 2 g to ± 500 g
- DC Response
- Integrated Over-range Stops
- Solid State Reliability
- High Level Output Model with Integrated Amplifier
- Mounting Brackets

The FA108 is a general purpose accelerometer that is especially useful for measuring very low frequencies. Its small size and light weight facilitate testing where these conditions are necessary. With two lateral brackets, the FA108 accelerometers are designed for easy mechanical mounting. They are also available with built-in A1/A2 module, providing internal signal conditioning.

With many years of experience as a designer and manufacturer of sensors, FGP Sensors often works with customers to design or customize sensors for specific uses and testing environments.

To meet your needs we also offer complete turnkey systems. The matched components (sensor, power, amplifier and digital display) are formatted, calibrated and ready for immediate use.



Characteristics

Measurement Range (g)	± 2	± 5	± 10	± 20	± 50	± 100	± 200	± 500
Over-range (g)	400	400	400	400	1000	2000	2000	2000
Frequency Response $\pm 5\%$ (Hz) FA108/FA108-A2	0-200	0-250	0-300	0-500	0-750	0-1000	0-1200	0-1250
Frequency Response $\pm 5\%$ (Hz) FA108-A1	0-100	0-150	0-250	0-400	0-700	0-700	0-700	0-700

北京赛斯维测控技术有限公司
北京市朝阳区望京西路48号
金隅国际C座1002

电话：+86 010 8477 5646

传真：+86 010 5894 9029

邮箱：sales@sensorway.cn

<http://www.sensorway.cn>

Technical Specifications

Range (F. S.)

From ± 2 to ± 500 g (see table on reverse side)

Over-range

From 400 to 2000 g (see table on reverse side)

Accuracy

Linearity : $<\pm 2\%$ F.S.
Transverse Sensitivity : $<3\%$ F.S.

Temperature Range

Operating Temperature Range (OTR) : -20 to 80 °C [-4 to 176 °F]
Compensated Temperature Range (CTR) : 0 to 60 °C [32 to 140 °F]
Zero Shift in CTR : $<2\%$ F.S. / 108 °F
Sensitivity Shift in CTR : $<2\%$ of reading / 108 °F

Electrical Characteristics

Reference	FA108	FA108-A1	FA108-A2
Supply Voltage	10 Vdc	10 to 30 Vdc	± 15 Vdc
F.S. Output	± 20 to ± 100 mV	± 2 V (± 250 mV)	± 5 V $\pm 5\%$ F.S.
Zero Offset	$<\pm 10$ mV	2.5 V (± 250 mV)	0 V $\pm 5\%$ of F.S.
Input Impedance/Consumption	10 k Ω	<30 mA	-
Output Impedance	<5 k Ω	<90 Ω	-
Insulation under 50 Vdc	≥ 100 M Ω	≥ 100 M Ω	≥ 100 M Ω

Electrical Termination

Shielded cable, standard length 2 m [6.5 ft] with strain relief spring
Shielding isolated from case

Mechanical Characteristics

Housing Material : Aluminium alloy
Weight w/o cable : <12 grams

Product References

Low Level Output Sensor

Model	Full Scale Range (F.S.)	Option(s)
FA108	2	ET1
		L : Linearity $\leq \pm 1\%$ F.S. ZI : Zero shift $\leq \pm 1\%$ F.S. in the standard CTR ET1 : CTR -20 to 100 °C [-4 to 212 °F] OTR=CTR ET2 : CTR -40 to 120 °C [-40 to 248 °F] OTR=CTR

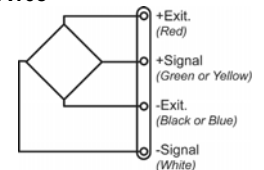
High Level Output Sensor

Model	Power Supply Reference	Full Scale Range (F.S.)	Option(s)
FA108	A1	2	ET1
	A1 : Unipolar-tension A2 : Bipolar-tension		L : Linearity $\leq \pm 1\%$ F.S. ZI : Zero shift $\leq \pm 1\%$ F.S. in the standard CTR ET1 : CTR -20 to 100 °C [-4 to 212 °F] OTR=CTR ET2 : CTR -40 to 120 °C [-40 to 248 °F] OTR=CTR LC"X" : Additional cable length in ft

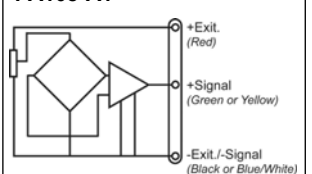
"X" = Custom value

Wiring Schematic

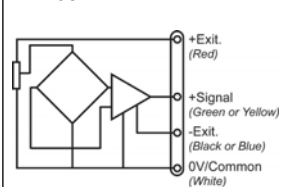
FA108



FA108-A1



FA108-A2



北京赛斯维测控技术有限公司

北京市朝阳区望京西路48号

金隅国际C座1002

电话 : +86 010 8477 5646

传真 : +86 010 5894 9029

邮箱 : sales@sensorway.cn

<http://www.sensorway.cn>